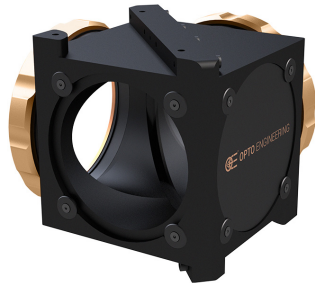


CMBS064 | DATASHEET

45° beam splitter with mount for 100.0 mm claming diameter optics



SPECIFICATIONS

Optical specifications

Front coating	Beam splitter 50/50 @ 45°, bandwidth 430-670 nm	
Back coating	Normal reflectance <0.5%, bandwidth 430-670 nm	
Clear aperture	(mm)	88
Deviation angle	(°)	90
Working distance difference ¹	(mm)	118.2
Protective windows ²	WI064	

Mechanical specifications

Clamping size	(mm)	100.0
Clamping system	locking	
Length	(mm)	141.2
Width	(mm)	128.0
Height	(mm)	141.2
Mass	(g)	1956

¹ Value to be subctrated from the objective or illuminator working distance when the CMBS is used

² To be ordered separately

KEY ADVANTAGES

Ready to use and easy to setup.

Ideal to create coaxial illumination solutions.

50% transmission and 50% reflection.

Easy and secure clamping system.

Compatible with telecentric lenses and illuminators.

CMBS series is a collection of 50/50 plate beam splitter modules designed to create highly efficient coaxial illumination solutions with Opto Engineering® telecentric lenses and collimated illuminators.

COMPATIBILITY

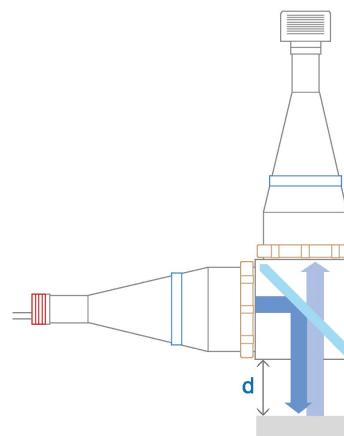
This products is compatible with the following lenses:

- TCxx064
- TCxMHR064-x
- TC1xM064-x

This products is compatible with the following illuminators:

- LTCLHP064-x

CMBS SETUP



COMPATIBLE PRODUCTS

Full list of compatible products available [here](#).



A wide selection of innovative machine vision components.